



Latest Cisco SBCS Solutions and Roadmaps 2011





Payton

Next-Gen ATA
with Integrated
DECT Base Station

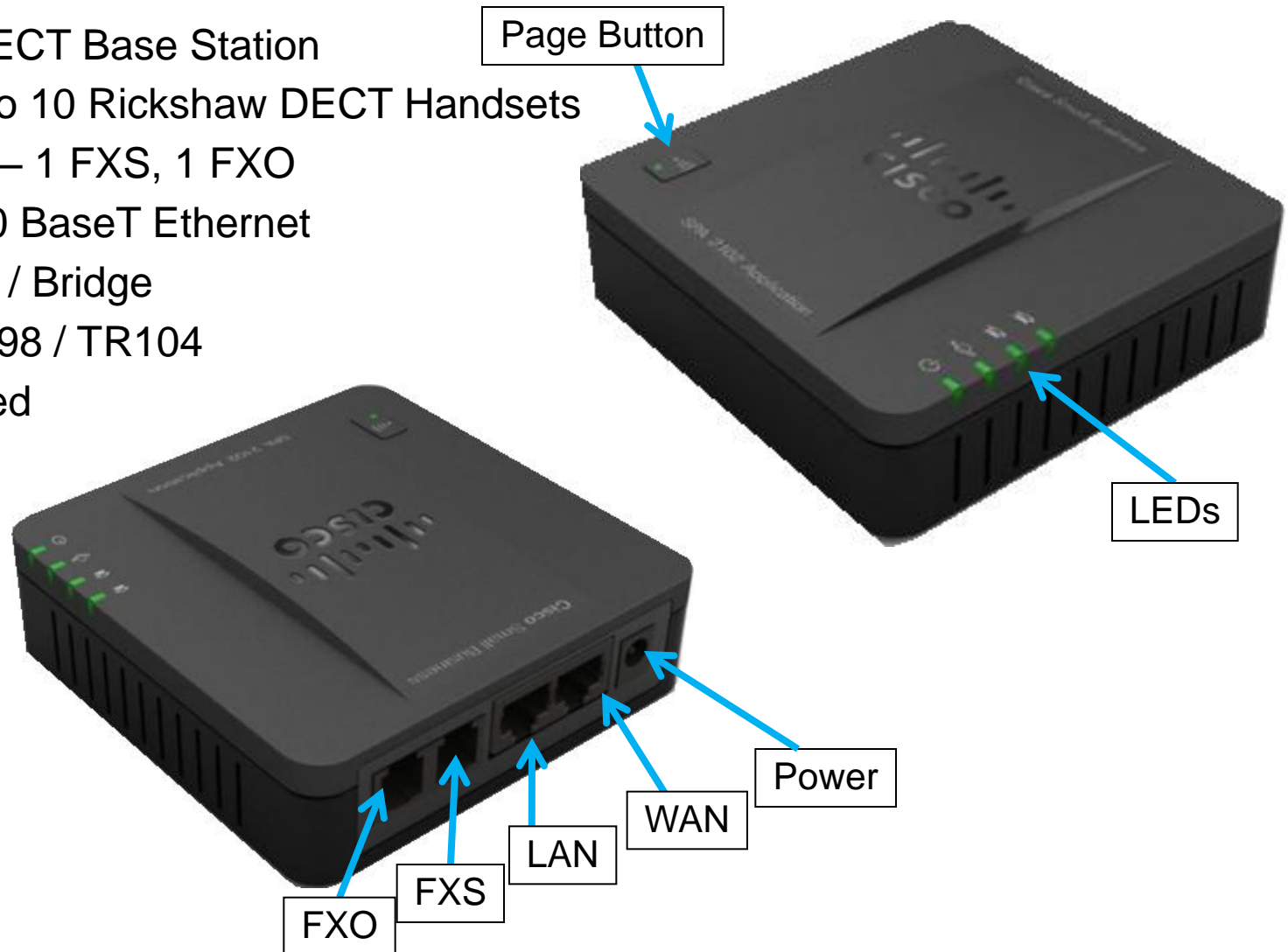


Project Payton Overview

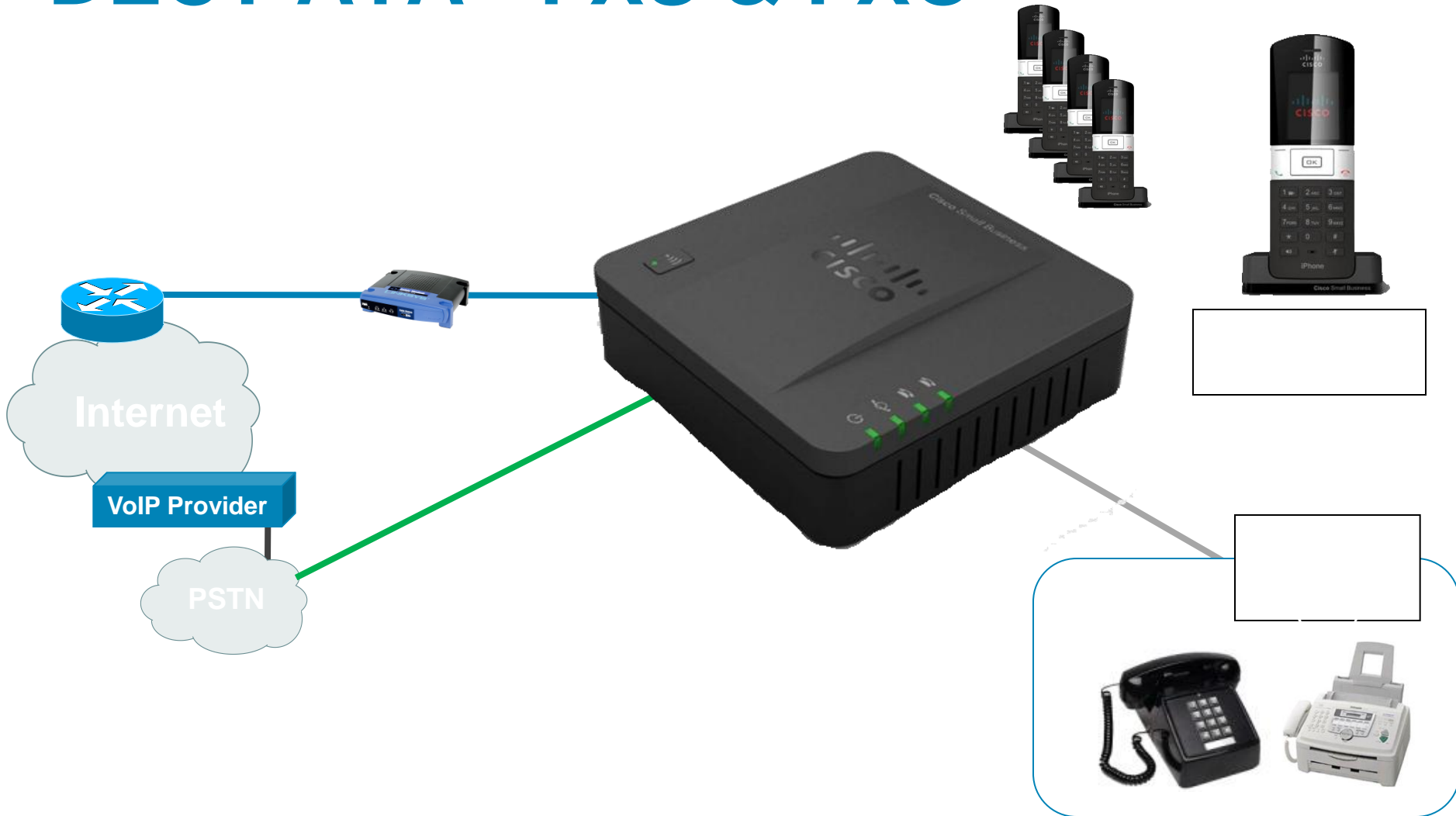
- Payton consists of 4 ATA Models
- Payton addresses refreshing the “Low-End” ATA portfolio.
- Introduces 2 new ATA devices with an Integrated DECT Base Station for small business and residential Cordless Phone subscribers.
 - Supports up to 4 active simultaneous calls
 - Can register up to 10 DECT Handsets
- Allows DECT integration with UC500, UC320, SRP500
- Project Rickshaw provides Cisco Branded DECT Handset
- Cisco Branded!

Payton (DECT, FXO Version)

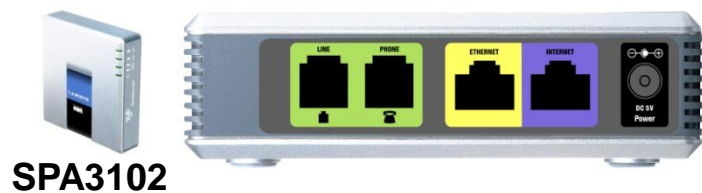
- Integrated DECT Base Station
- Register up to 10 Rickshaw DECT Handsets
- Phone Ports – 1 FXS, 1 FXO
- 2 Port 10/100 BaseT Ethernet
- Basic Router / Bridge
- TR069 / TR098 / TR104
- Cisco Branded



DECT ATA - FXS & FXO



ATA Transition

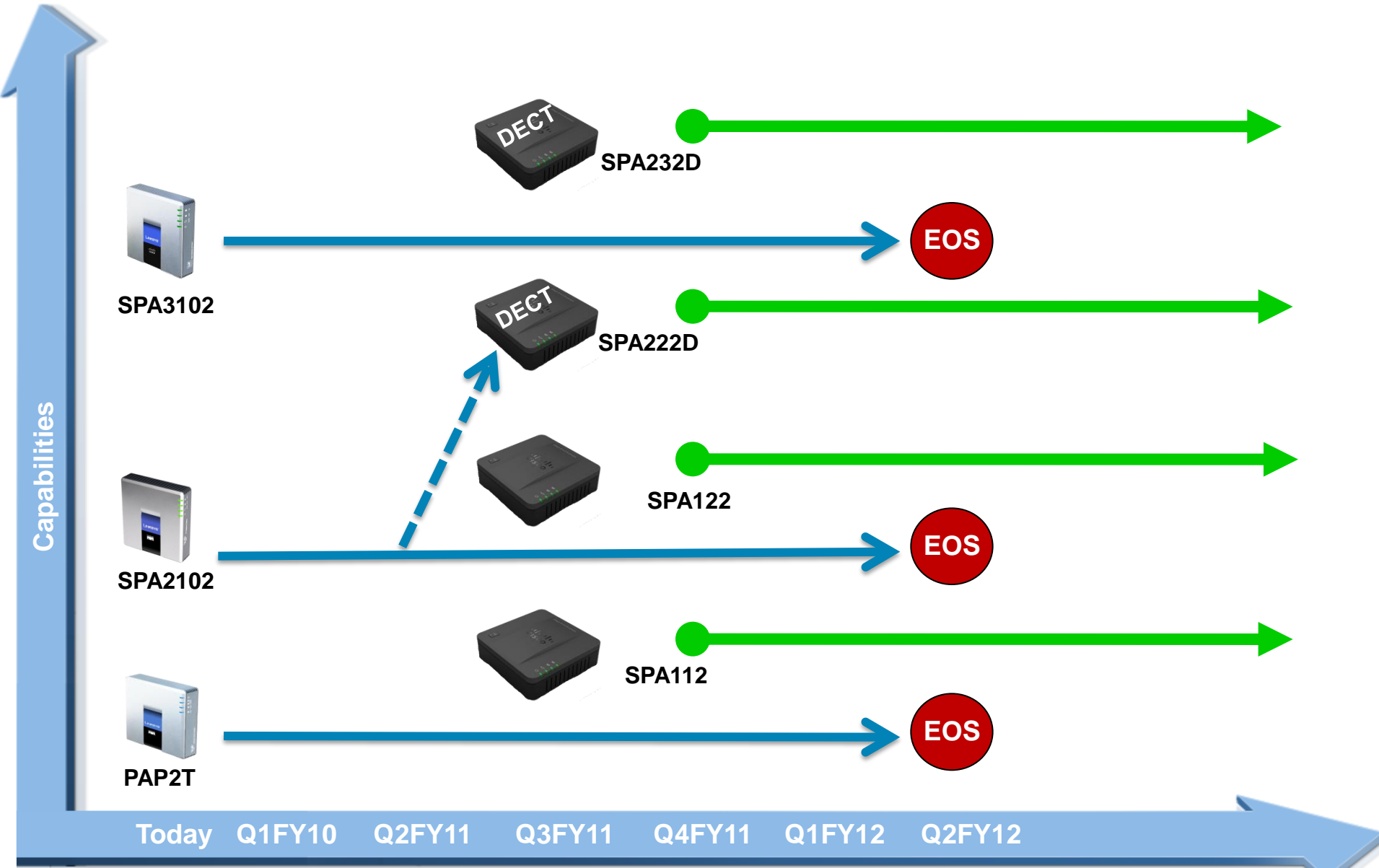


Project Rickshaw – DECT Handset

C[REDACTED]ly



Portfolio Transition Timeline





On the Roadmap: UC320



For
Small
Business



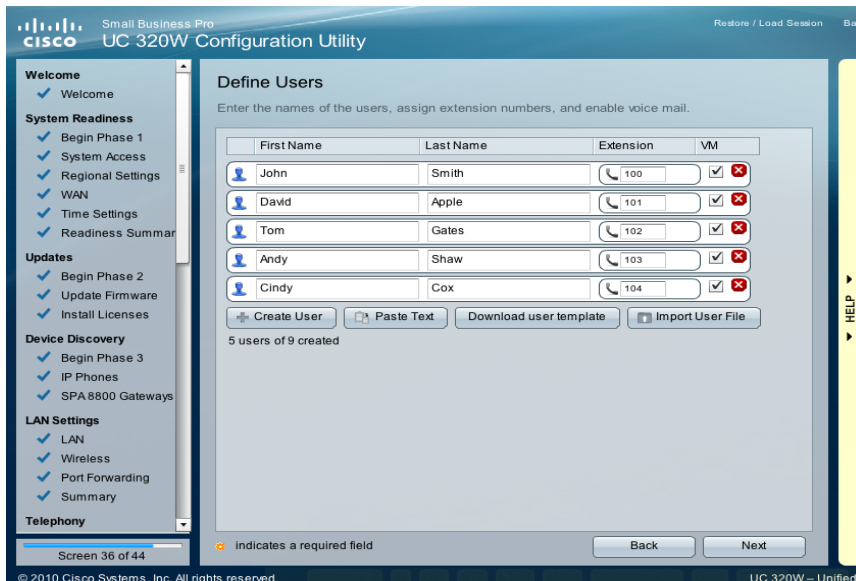
UC320 – Target customer profile

- SOHO/SB: 1 – 24 users (sweet spot 4 - 16 users)
- Requires a basic telephone system - KTS or PBX
 - Greenfield or KTS replacement, many Y2K
- May require voicemail, hunt group or auto attendant
- May require data integration (wired and wireless)
- ***Key purchase decision factor is price and service***



*“This unified solution for small businesses like your[s] will give you the best value for your investment and at the same time position your company for growth.”
(US/Canada)*

Cisco UC320 Overview Capabilities



- Up to 24 users, 4-16 sweet spot
- 4 10/100/1000 Mbps LAN ports
- Wireless B/G/N Access Point
- 10/100/1000 Mbps WAN Ethernet
- 4 FXO/Line ports (universal config)
 - Up to 12 local PSTN via SPA 8800
 - Up to 4 SIP accounts
 - Lifeline (FXS – FXO failover)
 - local 911 even with SIP
- 1 FXS port for Phone/fax
- Internal Voicemail and Auto-attendant
 - 12h capacity
- Music on Hold in and Paging out ports
- 2 USB ports for 3G data backup and other planned additions
- Support for SPA300 and SPA500 wired and wireless phones



Not release product, Features and design subject to change

Cisco UC 320 Premise Mode

Software Feature Summary

- **1 to 24 IP Telephones**
 - Base config with 8 users
 - Licenses in 4 users increase (16)
- **Up to 4 SIP accounts**
- **Up to 12 PSTN trunks (4 built-in)**
 - Up to two SPA8800 for FXS & FXO
- **Mediatrix 4400 for BRI Gateway**
- **SIPV2 Call Control Configuration**
 - Key System (Square) or PBX mode
 - Day/Night Ring mode
- **Automated Attendant (2x9 menu)**
 - Pre-recorded Customizable
- **Internal Voice Mail**
 - Pre-recorded Customizable
 - Voice to email relay
- **Music on Hold**
 - Internal, external or Network Based
 - Pre-recorded customizable MOH file
- **Business Call Control Features**
 - Shared Line Call Appearance
 - Call Forwarding (All, Busy, NA)
 - Call Transfer - Attended and blind
 - Call Pickup - Selective and Group
 - Intercom and paging (5 groups)
 - Do Not Disturb
 - Three Party Conference Calling
 - Call Park and Retrieve
 - Extension status monitoring
 - Call Hunt Groups
 - Direct Inward Dialing
- **Corporate directory**
- **Embedded configuration utility**
- **Basic CDR records**



Not released product, hardware ID and features may change on released product

Thank You

